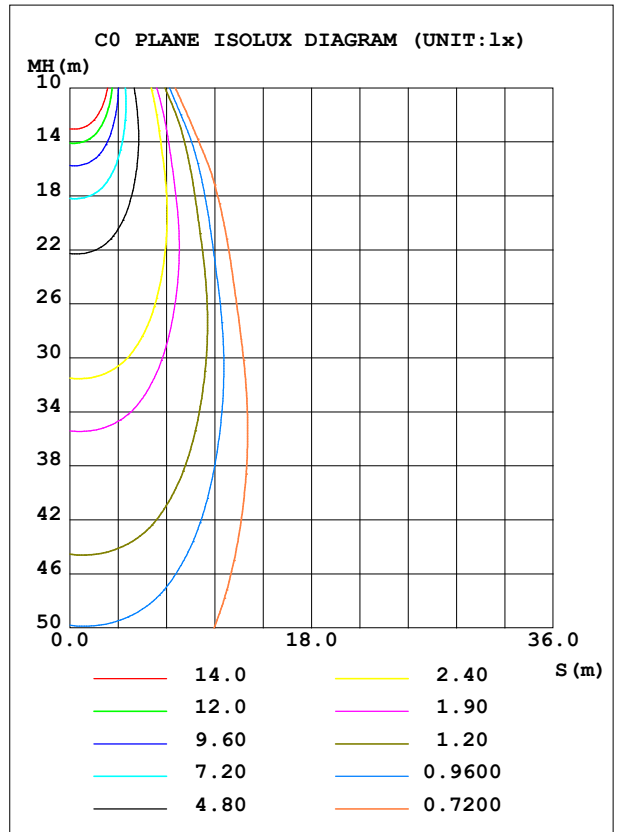
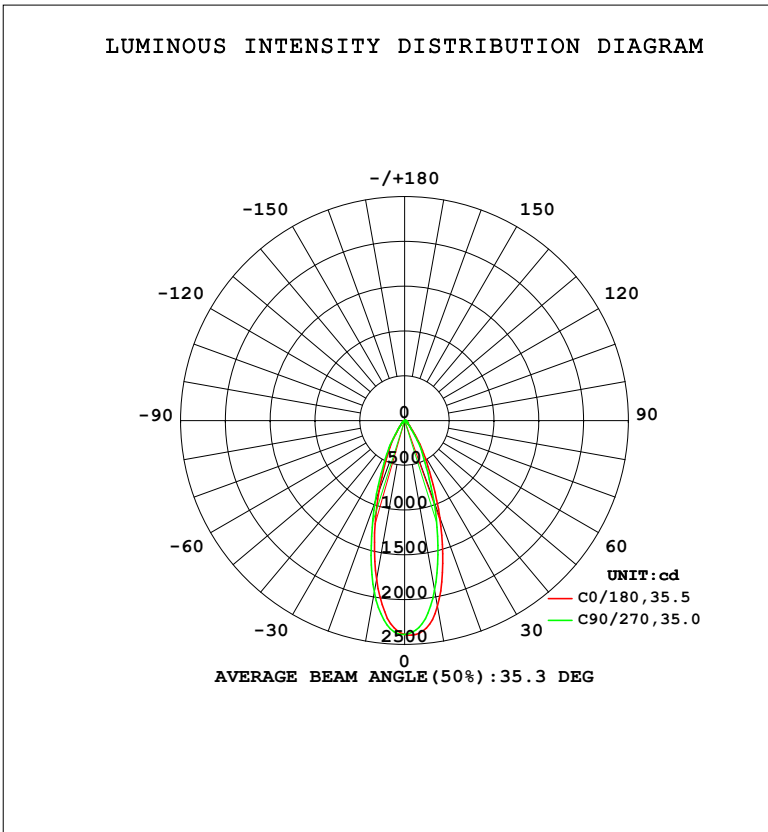


LUMINAIRE PHOTOMETRIC TEST REPORT

Test:U:120.28V I:0.1113A P:13.159W PF:0.9827 Freq:59.98Hz		
UTHDi:0.00% ITHDi:0.00% KDisp:0 Lamp Flux:1101.27x1 lm		
NAME: DLDM-2-CCT-15W	TYPE:	WEIGHT:
SPEC.: 4000K	DIM.:	SERIAL No.:
MFR.: DLL	SUR.:	Shielding Angle:

DATA OF LAMP		PHOTOMETRIC DATA			
MODEL	DLDM-2-CCT-15W	Imax (cd)	2397	S/MH (C0/180)	0.53
NOMINAL POWER (W)	15	LOR (%)	100.0	S/MH (C90/270)	0.57
RATED VOLTAGE (V)	120	TOTAL FLUX (lm)	1101.3	η UP, DN (C0-180)	0.0, 51.4
NOMINAL FLUX (lm)	1101.27	CIE CLASS	DIRECT	η UP, DN (C180-360)	0.0, 48.6
LAMPS INSIDE	1	η up (%)	0.0	CIBSE SHR NOM	0.50
TEST VOLTAGE (V)	120	η down (%)	100.0	CIBSE SHR MAX	0.60



C Range: 0 - 360DEG
 C Interval: 22.5DEG
 Test Speed: HIGH
 Temperature: 24.3 °C
 Operators:
 Test Date: 2024-06-19

γ Range: 0 - 90DEG
 γ Interval: 1.0DEG
 Test System: EVERFINE GO-SPEX500_V1 SYSTEM V2.00.460
 Humidity: 65.0%
 Test Distance: 3.080m [K=1.0000]
 Remarks:

ZONAL FLUX DIAGRAM

ZONAL FLUX DIAGRAM:

γ	C0	C45	C90	C135	C180	C225	C270	C315	γ	Φ zone	Φ total	%lum, lamp
10	2110	1988	1927	1912	1807	1882	1951	1997	0- 10	207.2	207.2	18.8,18.8
20	1152	1018	962.7	950.0	839.3	908.1	969.0	1026	10- 20	398.9	606.2	55,55
30	435.7	383.7	366.5	357.8	312.4	338.4	354.3	386.2	20- 30	277.6	883.8	80.3,80.3
40	119.4	105.7	99.30	95.88	82.82	87.28	88.65	98.42	30- 40	121.8	1006	91.3,91.3
50	44.15	42.16	41.13	40.25	36.44	37.70	38.37	39.45	40- 50	47.39	1053	95.6,95.6
60	22.23	21.01	20.09	19.66	17.80	18.88	19.42	19.88	50- 60	25.53	1078	97.9,97.9
70	11.01	10.23	9.906	9.798	8.843	9.393	9.700	9.870	60- 70	14.16	1093	99.2,99.2
80	4.397	3.885	3.701	3.653	3.038	3.453	3.664	3.725	70- 80	6.882	1100	99.8,99.8
90	0.2381	0.0563	0.0690	0.0645	0.0590	0.0471	0.0716	0.0542	80- 90	1.734	1101	100,100
100									90-100			
110									100-110			
120									110-120			
130									120-130			
140									130-140			
150									140-150			
160									150-160			
170									160-170			
180									170-180			
DEG	LUMINOUS INTENSITY:cd									UNIT:lm		

Conical surface Flux(90deg): 1033.7 lm

%lum = 93.9%

%lamp = 93.9%

Conical surface Flux(130deg): 1086.6 lm

%lum = 98.7%

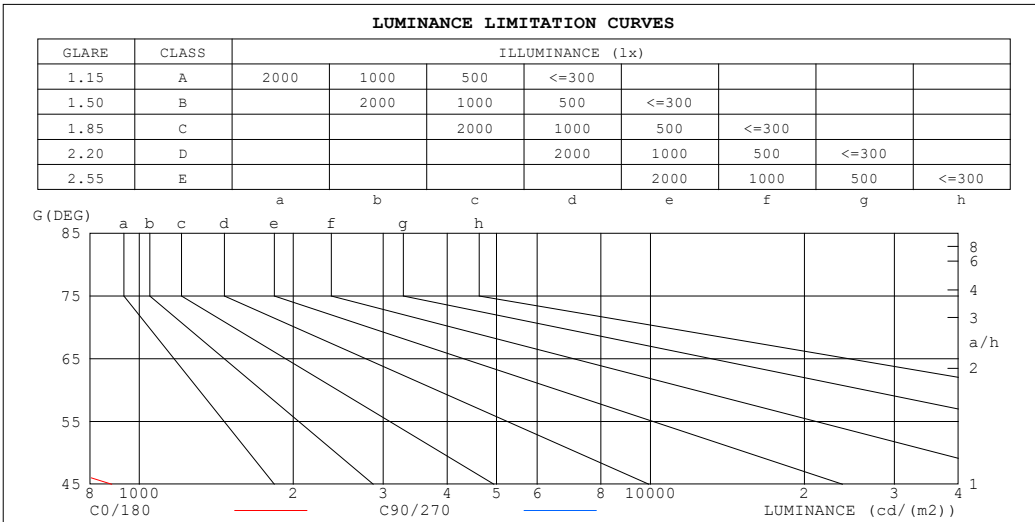
%lamp = 98.7%

C Range: 0 - 360DEG
 C Interval: 22.5DEG
 Test Speed: HIGH
 Temperature:24.3°C
 Operators:
 Test Date:2024-06-19

γ Range: 0 - 90DEG
 γ Interval: 1.0DEG
 Test System:EVERFINE GO-SPEX500_V1 SYSTEM V2.00.460
 Humidity:65.0%
 Test Distance:3.080m [K=1.0000]
 Remarks:

LUMINANCE LIMITATION CURVES

Test:U:120.28V I:0.1113A P:13.159W PF:0.9827 Freq:59.98Hz UTHDi:0.00% ITHDi:0.00% KDisp:0 Lamp Flux:1101.27x1 lm		
NAME: DLDM-2-CCT-15W	TYPE:	WEIGHT:
SPEC.: 4000K	DIM.:	SERIAL No.:
MFR.: DLL	SUR.:	Shielding Angle:



LUMINANCE cd/(m2)		
G (DEG)	C0/180	C90/270
85	214	156
80	227	192
75	254	225
70	289	261
65	334	304
60	399	363
55	495	451
50	617	577
45	883	770

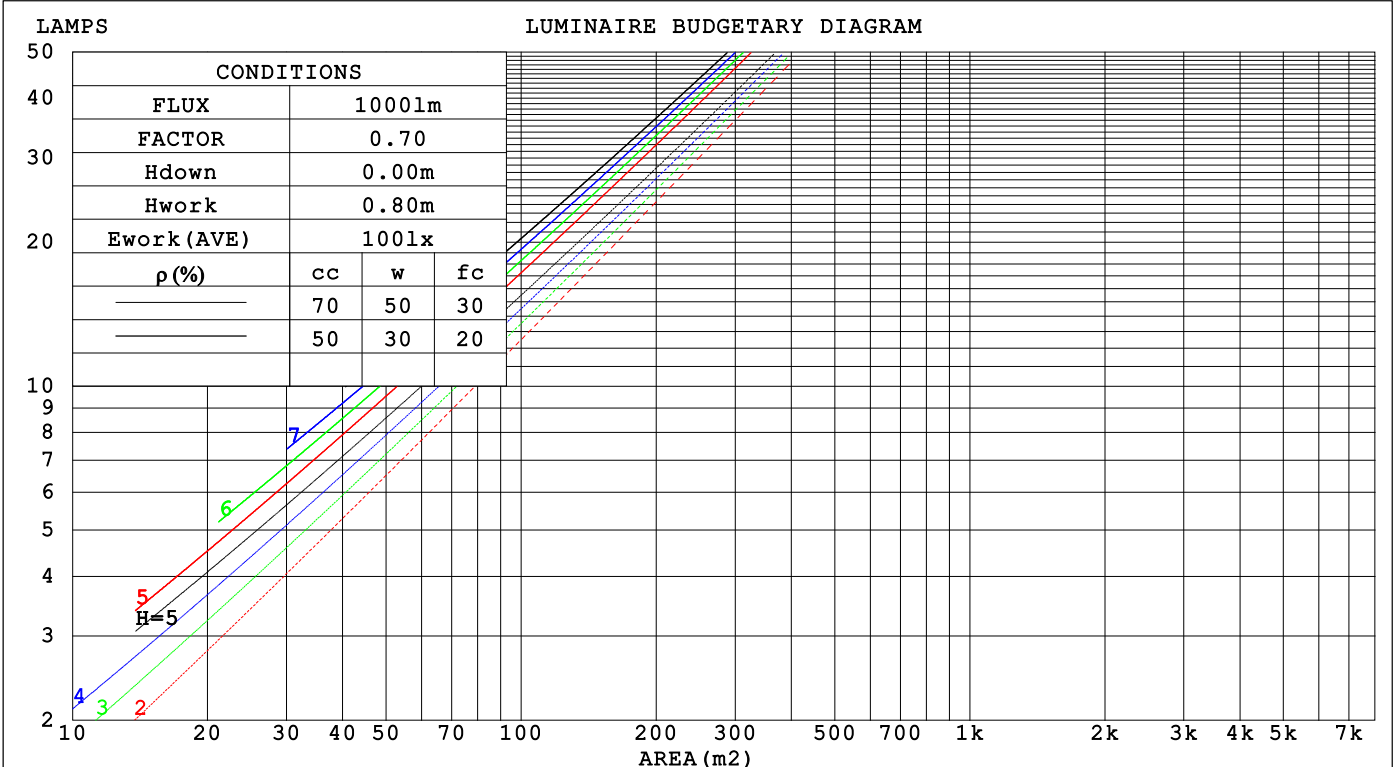
C Range: 0 - 360DEG
 C Interval: 22.5DEG
 Test Speed: HIGH
 Temperature: 24.3°C
 Operators:
 Test Date: 2024-06-19

γ Range: 0 - 90DEG
 γ Interval: 1.0DEG
 Test System: EVERFINE GO-SPEX500_V1 SYSTEM V2.00.460
 Humidity: 65.0%
 Test Distance: 3.080m [K=1.0000]
 Remarks:

CU AND LUMINAIRE BUDGETARY ESTIMATE DIAGRAM

Test:U:120.28V I:0.1113A P:13.159W PF:0.9827 Freq:59.98Hz		
UTHDi:0.00% ITHDi:0.00% KDisp:0 Lamp Flux:1101.27x1 lm		
NAME: DLDM-2-CCT-15W	TYPE:	WEIGHT:
SPEC.: 4000K	DIM.:	SERIAL No.:
MFR.: DLL	SUR.:	Shielding Angle:

pcc	80%			70%			50%			30%			10%			0
pw	50%	30%	10%	50%	30%	10%	50%	30%	10%	50%	30%	10%	50%	30%	10%	0
pfc	20%			20%			20%			20%			20%			0
RCR	RCR:Room Cavity Ratio			Coefficients of Utilization(CU)												
0.0	1.19	1.19	1.19	1.16	1.16	1.16	1.11	1.11	1.11	1.06	1.06	1.06	1.02	1.02	1.02	1.00
1.0	1.11	1.09	1.07	1.09	1.07	1.05	1.05	1.03	1.02	1.01	.00	.99	.98	.97	.96	.94
2.0	1.04	1.00	.97	1.02	.99	.96	.99	.96	.94	.96	.94	.92	.93	.92	.90	.88
3.0	.98	.93	.89	.96	.92	.89	.94	.90	.87	.91	.88	.86	.89	.87	.85	.83
4.0	.92	.87	.83	.91	.86	.83	.89	.85	.82	.87	.84	.81	.85	.82	.80	.78
5.0	.87	.82	.78	.86	.81	.78	.85	.80	.77	.83	.79	.76	.81	.78	.76	.74
6.0	.83	.77	.73	.82	.77	.73	.81	.76	.73	.79	.75	.72	.78	.75	.72	.70
7.0	.79	.73	.70	.78	.73	.69	.77	.72	.69	.76	.72	.69	.75	.71	.68	.67
8.0	.75	.70	.66	.75	.70	.66	.74	.69	.66	.73	.68	.65	.72	.68	.65	.64
9.0	.72	.67	.63	.71	.66	.63	.70	.66	.63	.70	.65	.62	.69	.65	.62	.61
10.0	.69	.64	.60	.68	.63	.60	.68	.63	.60	.67	.63	.60	.66	.62	.60	.58



C Range: 0 - 360DEG
 C Interval: 22.5DEG
 Test Speed: HIGH
 Temperature:24.3°C
 Operators:
 Test Date:2024-06-19

γ Range: 0 - 90DEG
 γ Interval: 1.0DEG
 Test System:EVERFINE GO-SPEX500_V1 SYSTEM V2.00.460
 Humidity:65.0%
 Test Distance:3.080m [K=1.0000]
 Remarks:

WEC AND CCEC

Test:U:120.28V I:0.1113A P:13.159W PF:0.9827 Freq:59.98Hz		
UTHDi:0.00% ITHDi:0.00% KDisp:0 Lamp Flux:1101.27x1 lm		
NAME: DLDM-2-CCT-15W	TYPE:	WEIGHT:
SPEC.: 4000K	DIM.:	SERIAL No.:
MFR.: DLL	SUR.:	Shielding Angle:

ρ_{CC}	80%			70%			50%			30%			10%			0
ρ_w	50%	30%	10%	50%	30%	10%	50%	30%	10%	50%	30%	10%	50%	30%	10%	0
ρ_{fc}	20%			20%			20%			20%			20%			0
RCR	RCR:Room Cavity Ratio						Wall Exitance Coefficients(WEC)									
0.0																
1.0	.171	.097	.031	.164	.094	.030	.151	.087	.028	.140	.081	.026	.129	.075	.024	
2.0	.161	.088	.027	.156	.086	.026	.145	.081	.025	.136	.076	.024	.127	.072	.023	
3.0	.152	.081	.024	.147	.079	.024	.138	.075	.023	.130	.071	.022	.123	.068	.021	
4.0	.144	.075	.022	.139	.073	.022	.132	.070	.021	.125	.067	.020	.118	.064	.020	
5.0	.136	.069	.020	.132	.068	.020	.126	.065	.019	.119	.063	.019	.114	.061	.018	
6.0	.129	.065	.018	.126	.064	.018	.120	.061	.018	.115	.060	.017	.109	.058	.017	
7.0	.122	.061	.017	.120	.060	.017	.115	.058	.017	.110	.056	.016	.105	.055	.016	
8.0	.117	.057	.016	.114	.056	.016	.110	.055	.016	.106	.054	.015	.102	.052	.015	
9.0	.112	.054	.015	.109	.053	.015	.105	.052	.015	.102	.051	.015	.098	.050	.014	
10.0	.107	.051	.014	.105	.051	.014	.101	.050	.014	.098	.049	.014	.095	.048	.014	

ρ_{CC}	80%			70%			50%			30%			10%			0
ρ_w	50%	30%	10%	50%	30%	10%	50%	30%	10%	50%	30%	10%	50%	30%	10%	0
ρ_{fc}	20%			20%			20%			20%			20%			0
RCR	RCR:Room Cavity Ratio						Ceiling Cavity Exitance Coefficients(CCEC)									
0.0	.190	.190	.190	.163	.163	.163	.111	.111	.111	.064	.064	.064	.020	.020	.020	
1.0	.171	.157	.145	.146	.135	.125	.100	.093	.087	.057	.054	.050	.018	.017	.016	
2.0	.155	.133	.114	.133	.114	.098	.091	.079	.069	.052	.046	.040	.017	.015	.013	
3.0	.142	.114	.091	.122	.098	.079	.083	.068	.055	.048	.040	.033	.015	.013	.011	
4.0	.131	.099	.074	.112	.085	.064	.077	.059	.045	.045	.035	.027	.014	.011	.009	
5.0	.122	.087	.061	.104	.075	.053	.072	.052	.038	.042	.031	.022	.013	.010	.007	
6.0	.114	.077	.051	.098	.067	.045	.067	.047	.032	.039	.028	.019	.013	.009	.006	
7.0	.107	.070	.044	.092	.060	.038	.063	.042	.027	.037	.025	.016	.012	.008	.005	
8.0	.101	.063	.037	.087	.055	.033	.060	.038	.023	.035	.023	.014	.011	.007	.005	
9.0	.095	.058	.033	.082	.050	.028	.057	.035	.020	.033	.021	.012	.011	.007	.004	
10.0	.090	.053	.029	.078	.046	.025	.054	.033	.018	.032	.019	.011	.010	.006	.004	

C Range: 0 - 360DEG
 C Interval: 22.5DEG
 Test Speed: HIGH
 Temperature:24.3℃
 Operators:
 Test Date:2024-06-19

γ Range: 0 - 90DEG
 γ Interval: 1.0DEG
 Test System:EVERFINE GO-SPEX500_V1 SYSTEM V2.00.460
 Humidity:65.0%
 Test Distance:3.080m [K=1.0000]
 Remarks:

UGR(Unified Glare Rating) Table

Test:U:120.28V I:0.1113A P:13.159W PF:0.9827 Freq:59.98Hz		
UTHDi:0.00% ITHDi:0.00% KDisp:0 Lamp Flux:1101.27x1 lm		
NAME: DLDM-2-CCT-15W	TYPE:	WEIGHT:
SPEC.: 4000K	DIM.:	SERIAL No.:
MFR.: DLL	SUR.:	Shielding Angle:

ceiling/cavity	0.7	0.7	0.5	0.5	0.3	0.7	0.7	0.5	0.5	0.3
walls	0.5	0.3	0.5	0.3	0.3	0.5	0.3	0.5	0.3	0.3
working plane	0.2	0.2	0.2	0.2	0.2	0.2	0.2	0.2	0.2	0.2

Room dimensions	Viewed crosswise					Viewed endwise				
x = 2H y = 2H	6.6	7.4	6.8	7.6	7.8	5.9	6.8	6.1	6.9	7.1
3H	6.8	7.6	7.1	7.8	8.0	6.2	7.0	6.4	7.2	7.4
4H	6.9	7.7	7.2	7.9	8.1	6.3	7.0	6.5	7.3	7.5
6H	7.0	7.7	7.3	8.0	8.2	6.3	7.1	6.6	7.3	7.5
8H	7.0	7.7	7.3	8.0	8.2	6.3	7.0	6.7	7.3	7.5
12H	7.0	7.7	7.4	8.0	8.2	6.3	7.0	6.7	7.3	7.5
4H 2H	6.6	7.3	6.8	7.5	7.8	5.9	6.7	6.2	6.9	7.1
3H	6.9	7.6	7.3	7.9	8.1	6.3	7.0	6.7	7.3	7.5
4H	7.1	7.7	7.5	8.0	8.3	6.5	7.1	6.9	7.4	7.7
6H	7.3	7.8	7.7	8.1	8.5	6.6	7.2	7.0	7.5	7.9
8H	7.3	7.8	7.7	8.2	8.5	6.7	7.2	7.1	7.5	7.9
12H	7.4	7.8	7.8	8.2	8.6	6.7	7.1	7.1	7.5	7.9
8H 4H	7.1	7.6	7.5	8.0	8.3	6.5	7.0	6.9	7.4	7.7
6H	7.3	7.7	7.8	8.1	8.5	6.7	7.1	7.2	7.5	7.9
8H	7.4	7.8	7.9	8.2	8.6	6.8	7.2	7.2	7.6	8.0
12H	7.5	7.8	7.9	8.2	8.7	6.8	7.1	7.3	7.6	8.0
12H 4H	7.1	7.5	7.5	7.9	8.3	6.5	7.0	6.9	7.3	7.7
6H	7.3	7.7	7.8	8.1	8.5	6.7	7.1	7.2	7.5	7.9
8H	7.4	7.7	7.9	8.2	8.6	6.8	7.1	7.3	7.5	8.0

Variations with the observer position at spacings(CIE Pub.117):		
S = 1.0H	+ 1.6 / - 1.6	+ 1.1 / - 1.5
1.5H	+ 2.8 / - 1.2	+ 1.9 / - 1.0
2.0H	+ 1.9 / - 1.1	+ 1.6 / - 1.1

CIE Pub.117, 1101 lm Total Lamp Luminous Flux Correct (8log(F/F0) = 0.3)
 Area: 0.111 m2

C Range: 0 - 360DEG	γ Range: 0 - 90DEG
C Interval: 22.5DEG	γ Interval: 1.0DEG
Test Speed: HIGH	Test System:EVERFINE GO-SPEX500_V1 SYSTEM V2.00.460
Temperature:24.3℃	Humidity:65.0%
Operators:	Test Distance:3.080m [K=1.0000]
Test Date:2024-06-19	Remarks:

UTILIZATION FACTORS TABLE

Test:U:120.28V I:0.1113A P:13.159W PF:0.9827 Freq:59.98Hz UTHDi:0.00% ITHDi:0.00% KDisp:0 Lamp Flux:1101.27x1 lm		
NAME: DLDM-2-CCT-15W	TYPE:	WEIGHT:
SPEC.: 4000K	DIM.:	SERIAL No.:
MFR.: DLL	SUR.:	Shielding Angle:

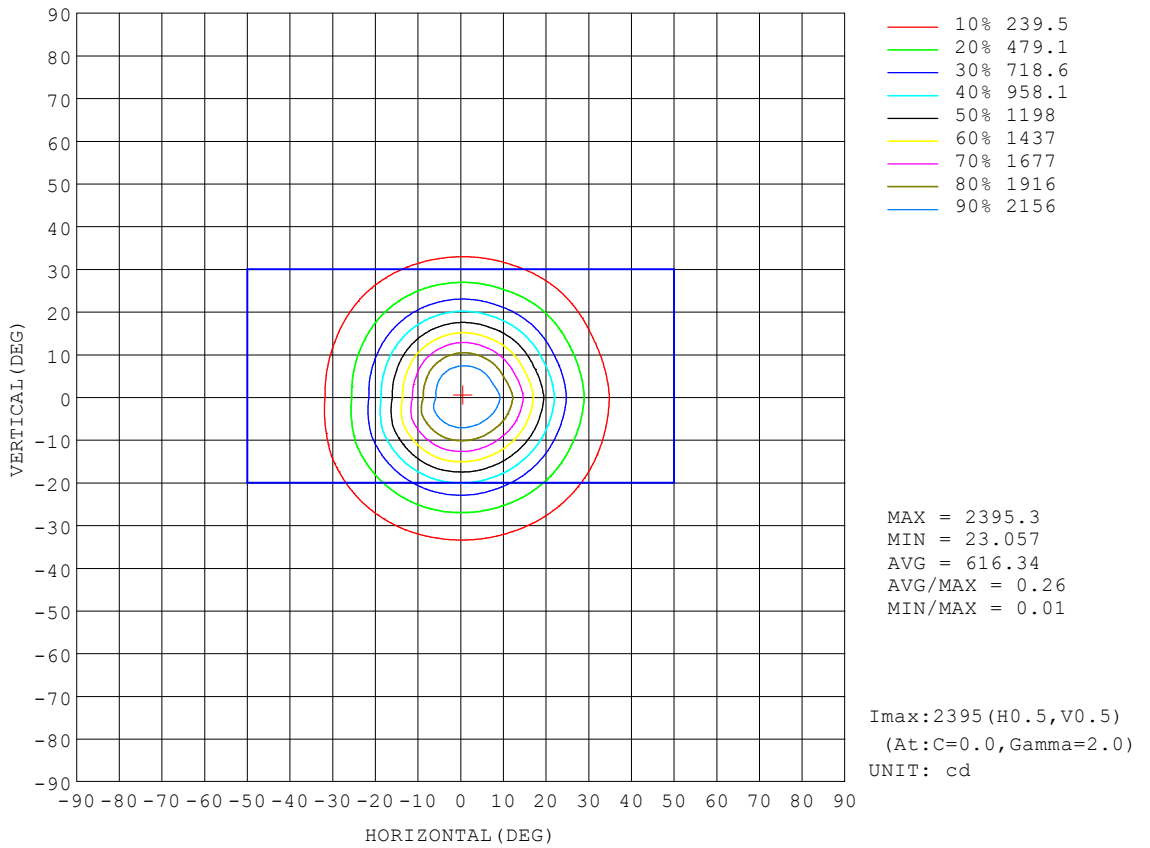
REFLECTANCE										
Ceiling	0.8	0.8	0.8	0.7	0.7	0.7	0.5	0.5	0.5	0
Walls	0.7	0.5	0.3	0.7	0.5	0.3	0.7	0.5	0.3	0
Working plane	0.2	0.2	0.2	0.2	0.2	0.2	0.2	0.2	0.2	0
ROOM INDEX	UTILIZATION FACTORS (PERCENT) $k(RI) \times RCR = 5$									
$k = 0.60$	86	80	76	86	79	76	85	79	75	72
0.80	94	88	84	93	87	84	92	87	83	79
1.00	98	92	89	97	92	88	96	92	88	84
1.25	102	97	93	101	96	93	99	95	92	88
1.50	105	100	97	104	99	96	102	98	95	91
2.00	108	104	100	107	103	100	104	101	98	93
2.50	110	106	103	108	105	102	105	102	100	94
3.00	111	108	105	110	106	104	106	104	102	95
4.00	113	111	108	111	109	107	108	106	104	97
5.00	115	112	110	113	111	109	109	107	106	98
ROOM INDEX	UF(total)									Direct
According to DIN EN 13032-2 2004			Suspended				SHRNOM = 1.25			

C Range: 0 - 360DEG
 C Interval: 22.5DEG
 Test Speed: HIGH
 Temperature: 24.3°C
 Operators:
 Test Date: 2024-06-19

γ Range: 0 - 90DEG
 γ Interval: 1.0DEG
 Test System: EVERFINE GO-SPEX500_V1 SYSTEM V2.00.460
 Humidity: 65.0%
 Test Distance: 3.080m [K=1.0000]
 Remarks:

ISOCANDELA DIAGRAM

Test:U:120.28V I:0.1113A P:13.159W PF:0.9827 Freq:59.98Hz UTHDi:0.00% ITHDi:0.00% KDisp:0 Lamp Flux:1101.27x1 lm		
NAME: DLDM-2-CCT-15W	TYPE:	WEIGHT:
SPEC.: 4000K	DIM.:	SERIAL No.:
MFR.: DLL	SUR.:	Shielding Angle:



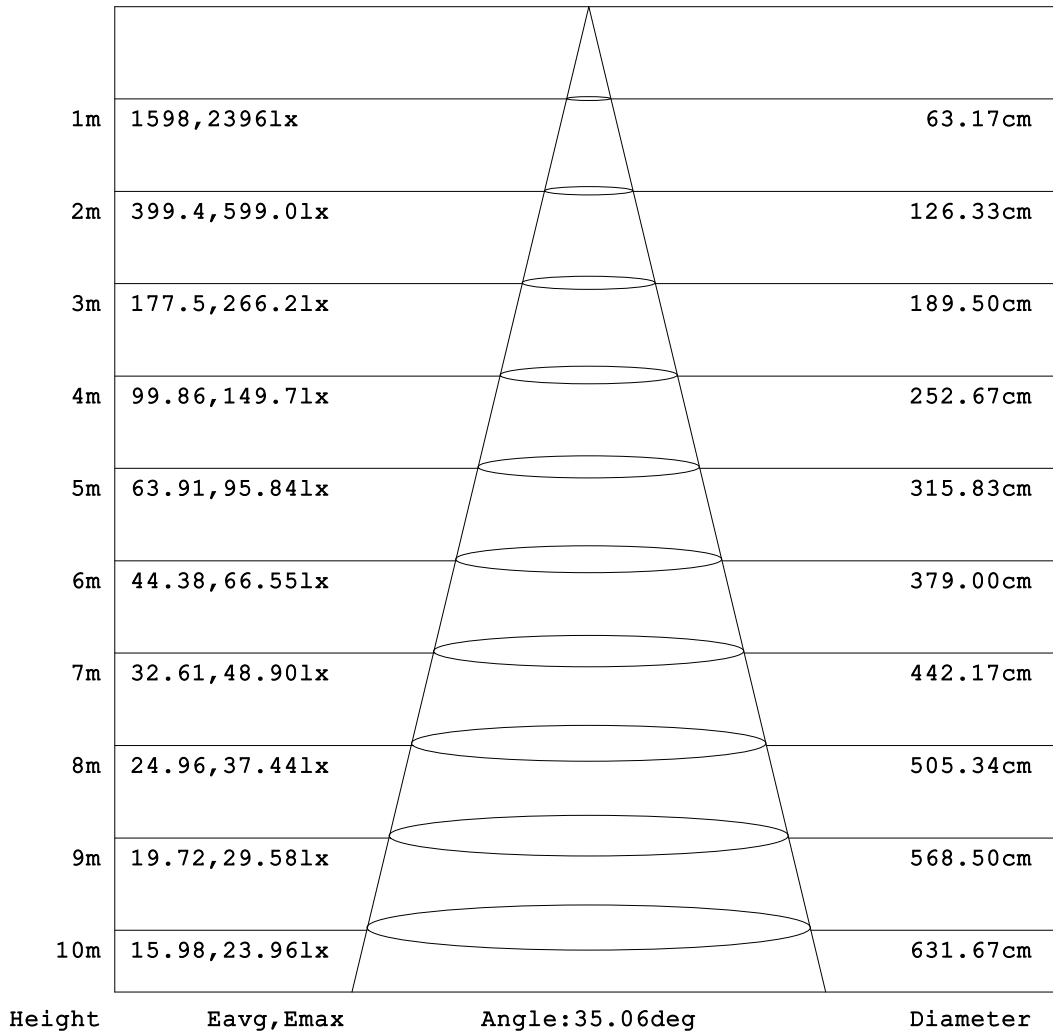
C Range: 0 - 360DEG
 C Interval: 22.5DEG
 Test Speed: HIGH
 Temperature:24.3 °C
 Operators:
 Test Date:2024-06-19

γ Range: 0 - 90DEG
 γ Interval: 1.0DEG
 Test System:EVERFINE GO-SPEX500_V1 SYSTEM V2.00.460
 Humidity:65.0%
 Test Distance:3.080m [K=1.0000]
 Remarks:

AAI Figure

Test:U:120.28V I:0.1113A P:13.159W PF:0.9827 Freq:59.98Hz		
UTHDi:0.00% ITHDi:0.00% KDisp:0 Lamp Flux:1101.27x1 lm		
NAME: DLDM-2-CCT-15W	TYPE:	WEIGHT:
SPEC.: 4000K	DIM.:	SERIAL No.:
MFR.: DLL	SUR.:	Shielding Angle:

Flux out:529.9 lm



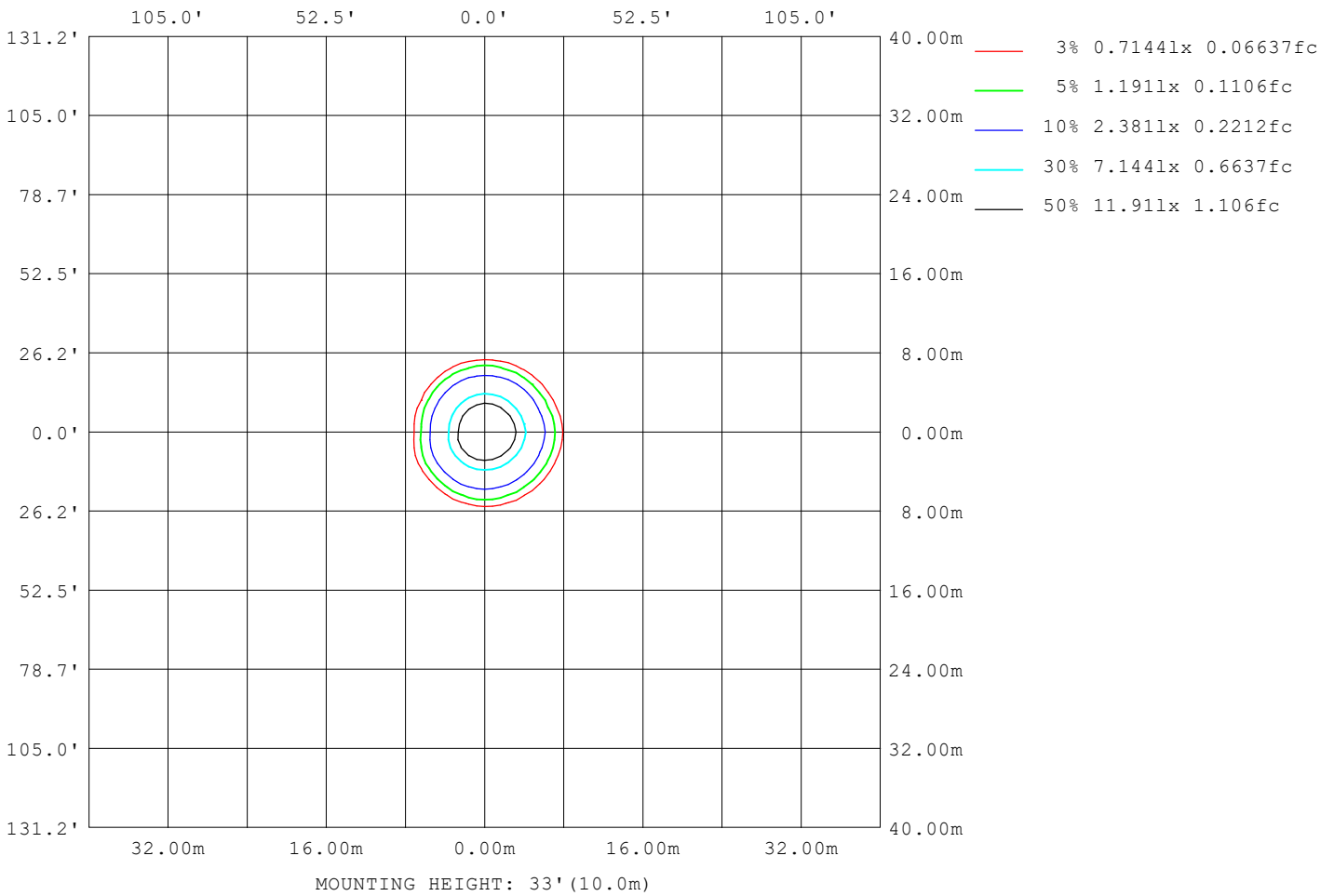
Note: The Curves indicate the illuminated area and the average illumination when the luminaire is at different distance.

C Range: 0 - 360DEG
 C Interval: 22.5DEG
 Test Speed: HIGH
 Temperature: 24.3 °C
 Operators:
 Test Date: 2024-06-19

γ Range: 0 - 90DEG
 γ Interval: 1.0DEG
 Test System: EVERFINE GO-SPEX500_V1 SYSTEM V2.00.460
 Humidity: 65.0%
 Test Distance: 3.080m [K=1.0000]
 Remarks:

ISOLUX DIAGRAM

Test:U:120.28V I:0.1113A P:13.159W PF:0.9827 Freq:59.98Hz UTHDi:0.00% ITHDi:0.00% KDisp:0 Lamp Flux:1101.27x1 lm		
NAME: DLDM-2-CCT-15W	TYPE:	WEIGHT:
SPEC.: 4000K	DIM.:	SERIAL No.:
MFR.: DLL	SUR.:	Shielding Angle:



C Range: 0 - 360DEG
 C Interval: 22.5DEG
 Test Speed: HIGH
 Temperature: 24.3°C
 Operators:
 Test Date: 2024-06-19

γ Range: 0 - 90DEG
 γ Interval: 1.0DEG
 Test System: EVERFINE GO-SPEX500_V1 SYSTEM V2.00.460
 Humidity: 65.0%
 Test Distance: 3.080m [K=1.0000]
 Remarks:

LED Avg.L Report

Test:U:120.28V I:0.1113A P:13.159W PF:0.9827 Freq:59.98Hz UTHDi:0.00% ITHDi:0.00% KDisp:0 Lamp Flux:1101.27x1 lm		
NAME: DLDM-2-CCT-15W	TYPE:	WEIGHT:
SPEC.: 4000K	DIM.:	SERIAL No.:
MFR.: DLL	SUR.:	Shielding Angle:

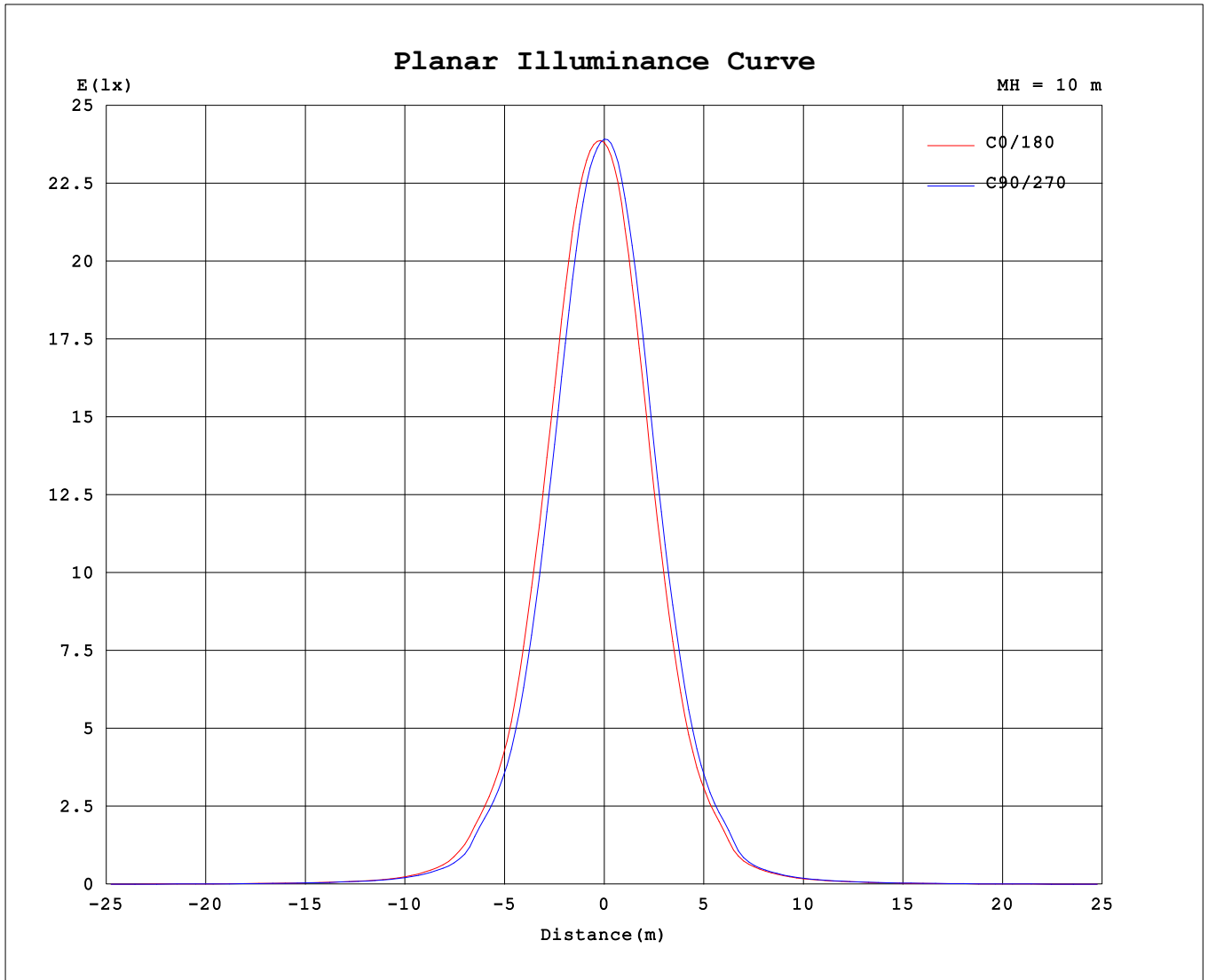
AvgL	cd/m2
L_0~180 (65) av	304
L_0~180 (75) av	225
L_0~180 (85) av	158
L_90~270 (65) av	300
L_90~270 (75) av	223
L_90~270 (85) av	158
L_45 (65) av	300
L_45 (75) av	223
L_45 (85) av	156

Standard: GB/T 29293-2012

C Range: 0 - 360DEG
 C Interval: 22.5DEG
 Test Speed: HIGH
 Temperature:24.3℃
 Operators:
 Test Date:2024-06-19

γ Range: 0 - 90DEG
 γ Interval: 1.0DEG
 Test System:EVERFINE GO-SPEX500_V1 SYSTEM V2.00.460
 Humidity:65.0%
 Test Distance:3.080m [K=1.0000]
 Remarks:

Planar Illuminance Curve



C Range: 0 - 360DEG
 C Interval: 22.5DEG
 Test Speed: HIGH
 Temperature: 24.3 °C
 Operators:
 Test Date: 2024-06-19

γ Range: 0 - 90DEG
 γ Interval: 1.0DEG
 Test System: EVERFINE GO-SPEX500_V1 SYSTEM V2.00.460
 Humidity: 65.0%
 Test Distance: 3.080m [K=1.0000]
 Remarks:

